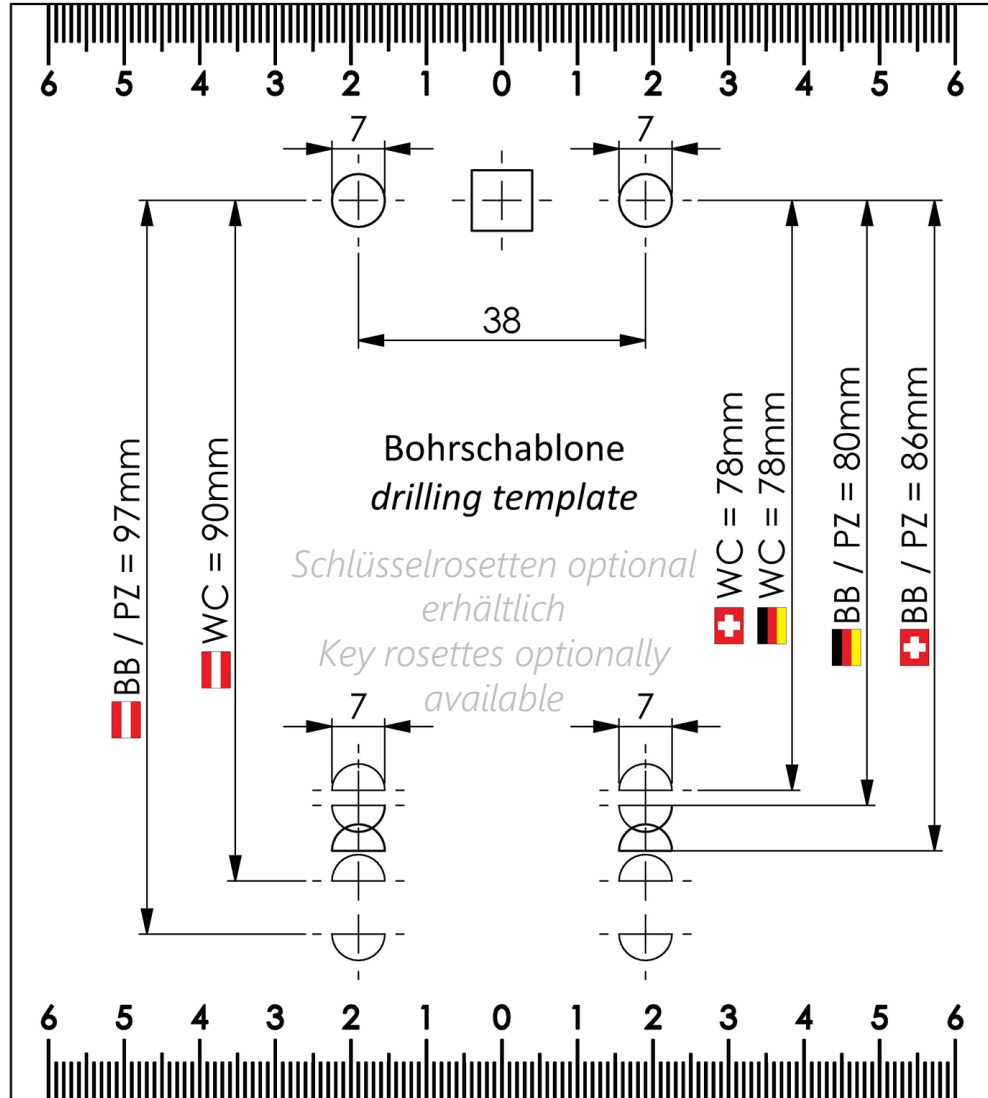
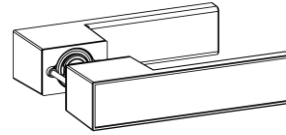


Druckgröße 100 % verwenden 280 x 160mm  
 / use print size 100% 280 x 160mm



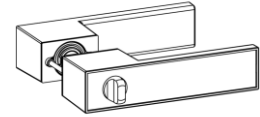
## MONTAGEANLEITUNG DRÜCKERGARNITUR FRAME 1.0 MOUNTING INSTRUCTIONS HANDLE SET FRAME 1.0

UV

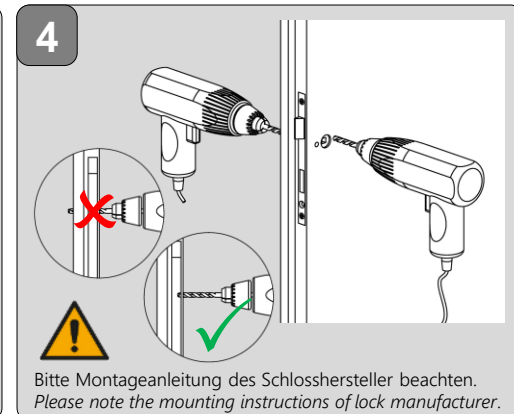
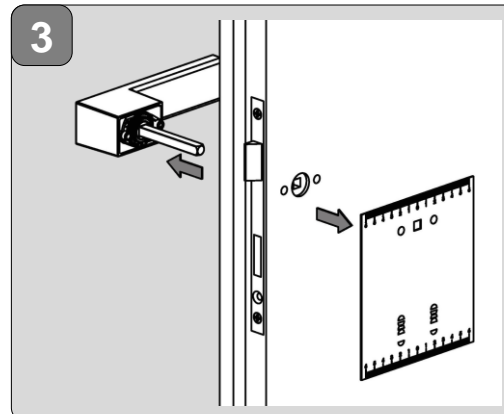
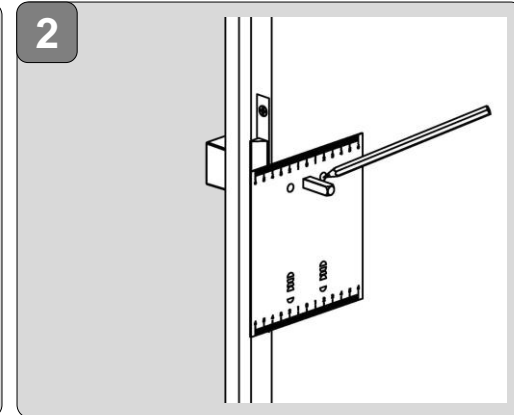
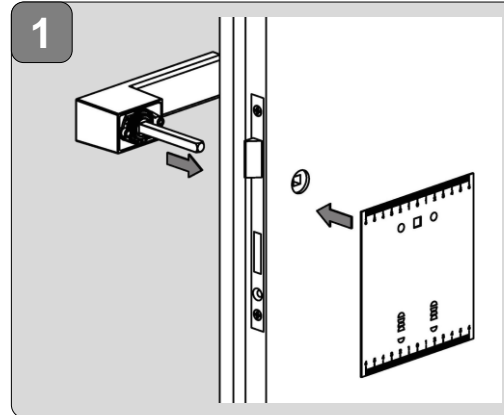


1 - 8

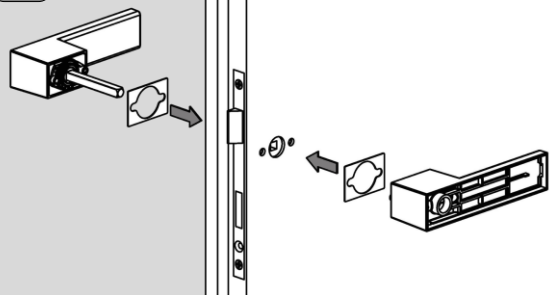
WC



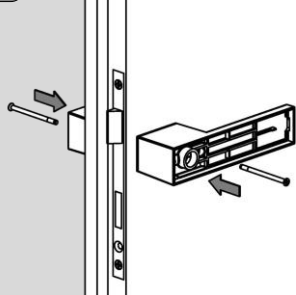
1 - 10



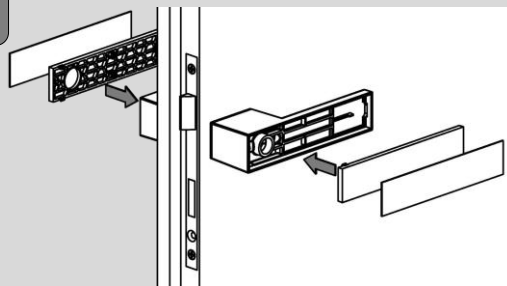
5



6

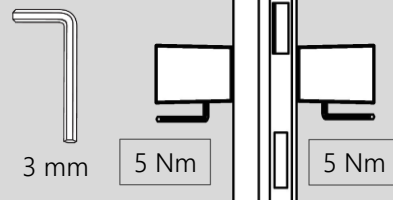


7



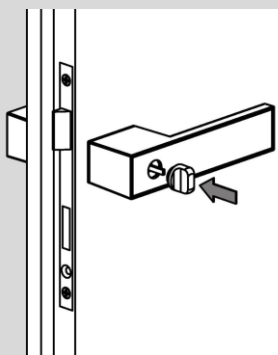
Griffeinleger entsprechend Einleger-dicke wählen/  
Select the insert according to the inlay thickness.

8

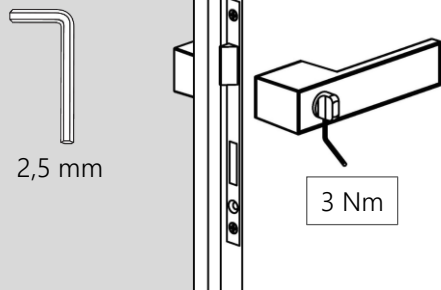


Bei neuer Montage neue Madenschraube  
verwenden  
please use new grub screw for new mounting.

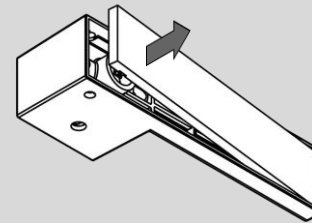
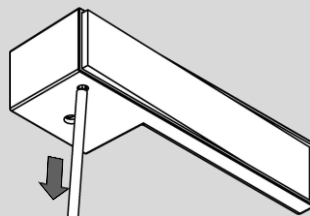
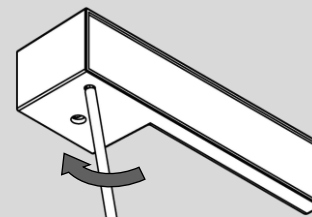
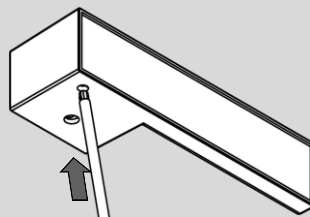
9 WC



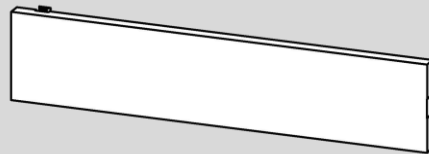
10 WC



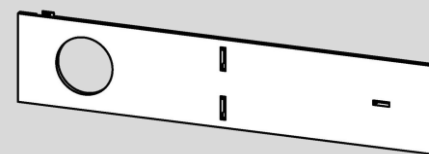
## Demontage Einleger



## Montage Einleger

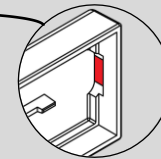
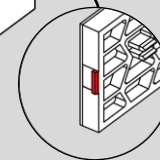
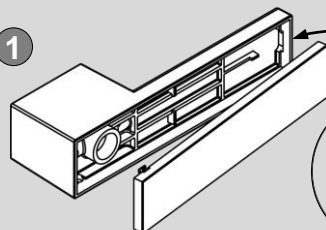


Griffeinleger für 0,8mm starke Einleger  
Insert for Inlays with 0,8mm thickness



Griffeinleger für 3,0mm starke Einleger  
Insert for Inlays with 3,0mm thickness

1



2

